

Case Problem

By: Reza Gholami MD

A 31 years old woman comes with Lower abdominal pain, recurrent rectorhagia and altered bowel habits.

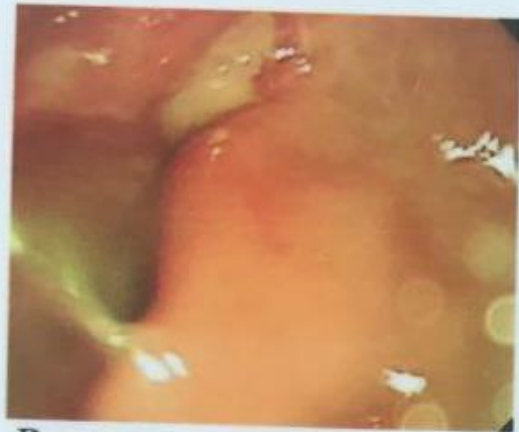
She is otherwise healthy.

Ph/Ex reveals hypogastric tenderness

**She has been underwent
colonoscopy previously which
reported solitary rectal ulcer
without any other lesion**



Rectum



Rectum



Rectum



Rectum



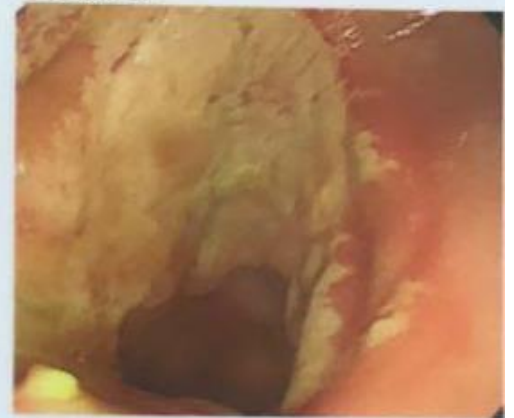
Rectum



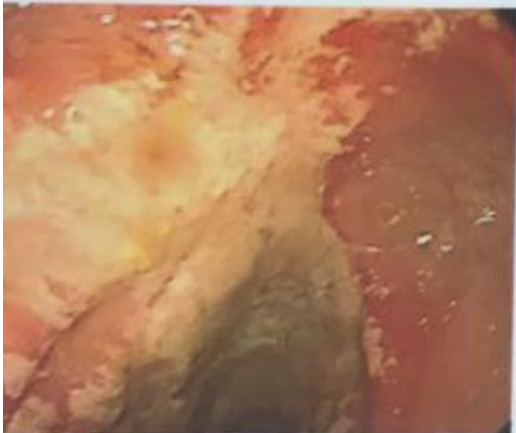
Rectum



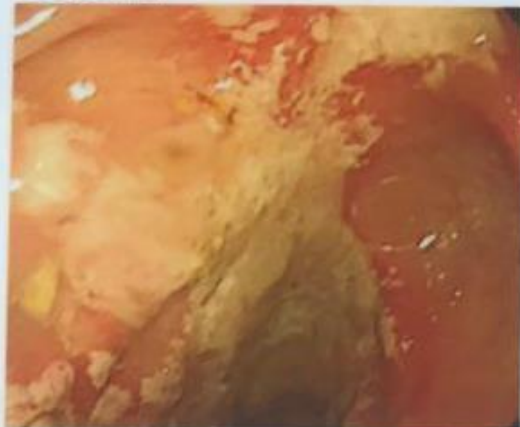
Rectum



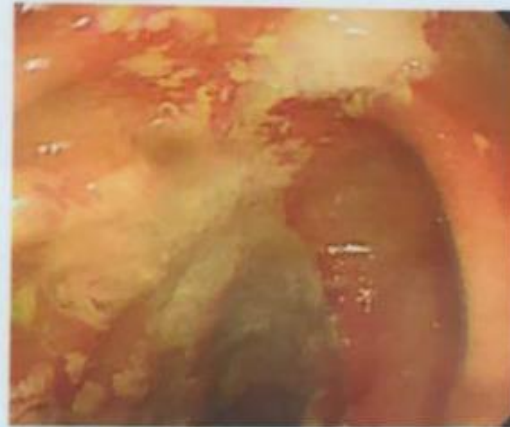
Rectum



Rectum



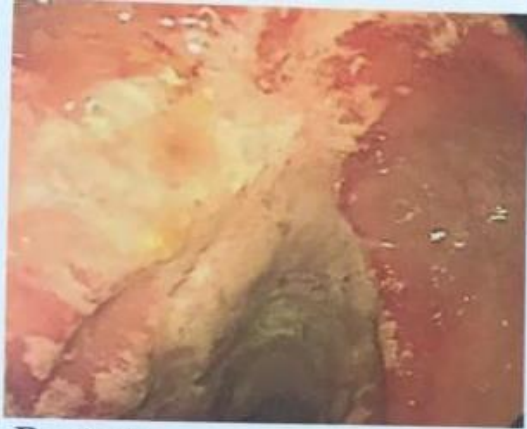
Rectum



Rectum



Rectum



Rectum



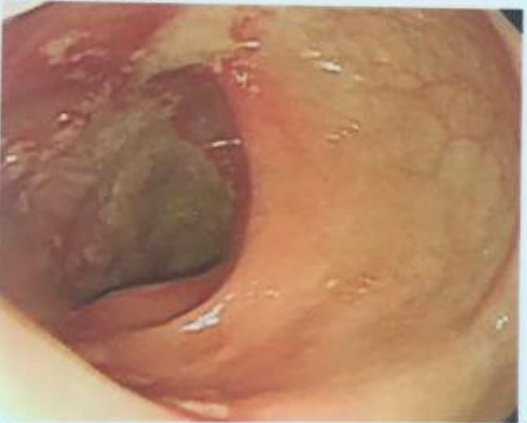
Rectum



Rectum



Rectum



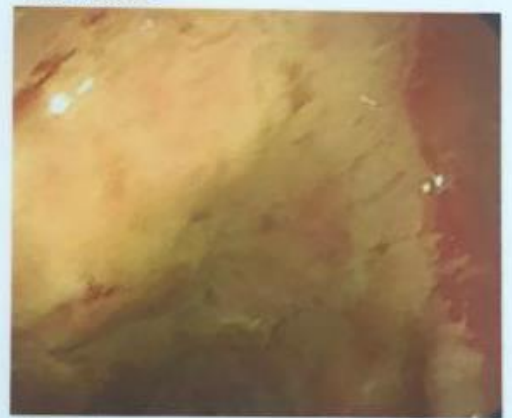
Rectum



Rectum



Rectum



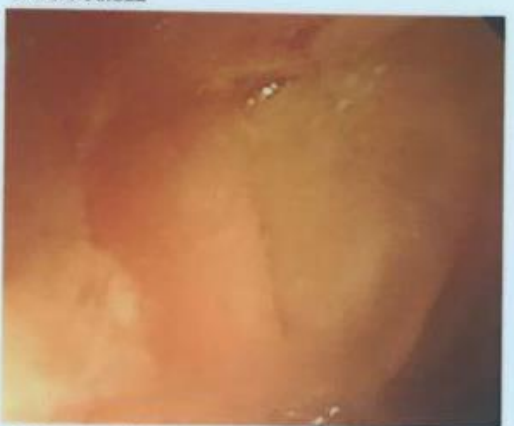
Rectum



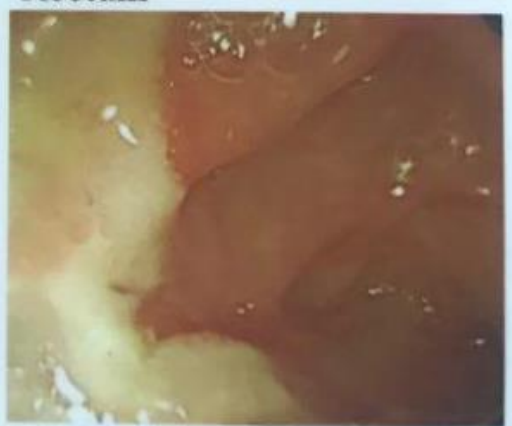
Rectum



Rectum



Sigmoid



Sigmoid



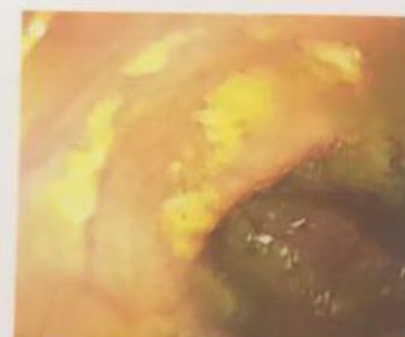
Sigmoid



Mid. portion of Transverse
Colon



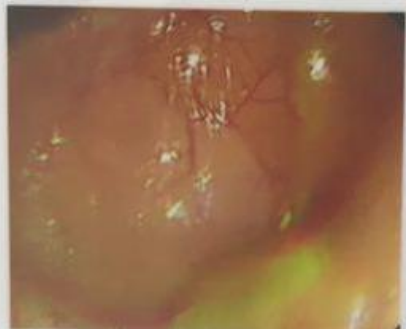
Hepatic Flexure



Ascending Colon



Ascending Colon



Ascending Colon



Ascending Colon



Cecum



Cecum

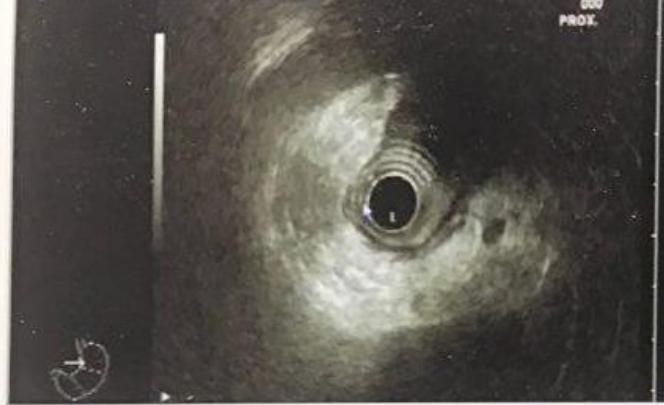
Reason for Endoscopy: Abdominal distress/pain, Altered bowel habit, Screening, Hematochezia

Rectum: Few Multiple Ulcers that its largest diameter were 25 mm that its largest diameter was 30 mm with Stigmata of Bleeding in Rectum

Diagnostic and Therapeutic Operations: Cold Biopsy with Forceps was performed









Rectum

In Rectum compatible with ulcerative lesions;
Circumferential Thickness in layers that rectic to 4th layer was seen, One round hyper echoic mass in rectal wall was seen
Multiple LN with different size max was 14mm in prirectal area was seen
Iliac Area looking for LN but was negative
IAS normal but Mildly thick

**Pathology reports are compatible
with paraganglionoma**

The slide features a white background with a decorative graphic on the right side. This graphic consists of several overlapping, semi-transparent green shapes in various shades, ranging from light lime green to dark forest green. These shapes are primarily triangular and polygonal, creating a modern, abstract design. The text is positioned on the left side of the slide, centered vertically, and is rendered in a bold, dark grey sans-serif font.